

## TEXAS SFI IMPLEMENTATION COMMITTEE (SIC) Biodiversity In Fiber Sourcing Forests With Exceptional Conservation Value (FECV) Assessment

### SUMMARY

In accordance with the requirements of the 2022 SFI Fiber Sourcing Standard, the SFI State Implementation Committee of Texas has developed an assessment of Forests of Exceptional Conservation Value (FECVs). A list of Globally Critically Imperiled (G1) and Imperiled (G2) species and ecosystems from NatureServe was conglomerated and will be used for as a source for education, information, and mitigation to ensure their protection across the landscape. The state SIC and participating SFI certified organizations will use this information to develop training materials and programs for wood producers, foresters, loggers, and private non-industrial forest landowners within their fiber procurement regions.

### BACKGROUND

Sustainable Forestry Initiative (SFI) certified organizations have been supporting biodiversity conservation since their initial certification to the Fiber Sourcing standard. While some of the Forests with Exceptional Conservation Value (FECV) related requirements in the SFI 2015-2019 Fiber Sourcing Standard did not change, the 2022 SFI Fiber Sourcing Standard introduces new requirements to promote and conserve FECVs.

**The 2022 SFI Fiber Sourcing Standard Objective 1. Biodiversity in Fiber Sourcing Performance Measure 1.2.** Promotion and conservation of Forests with Exceptional Conservation Value **Indicator 1** states, *“Certified Organizations shall conduct an assessment, individually and/or through cooperative efforts involving SFI Implementation Committees, of Forests with Exceptional Conservation Value, defined as critically imperiled and imperiled species and ecological communities, within their wood and fiber supply area(s) and make the summary of the assessment available to wood producers.”*

SFI-certified organizations are responsible for demonstrating conformance with the new requirements of the 2022 SFI Standard. However, SFI State Implementation Committees (SICs) provide an opportunity for SFI-certified organizations to collaboratively leverage activities to meet SFI certification requirements in a cost-efficient, expeditious, and mutually beneficial manor. Multilateral cooperation amongst SFI-certified organizations operating in similar geographies, with similar markets and similar forest ecosystems increases efficiency and provides regional consistency in messaging and forest management practices.

### METHODS

Representatives from SIC member companies participated in the FECV Playbook Training session and then formed an ad hoc FECV working group to conduct the FECV Assessment. The group met multiple times to develop the scope of work, discuss document sharing, and assign tasks.

[NatureServe Explorer](#) was used to export an Excel spreadsheet of all G1 and G2 species and ecosystems for the state. Columns were then added to the spreadsheet as part of the effort to assess forestry activity impacts to each. These columns were:

- A Determination of Impact
  - (N) – Not Impacted By Forest Management
  - (P) – Potentially Impacted By Forest Management
  - (I) – Impacted by Forest management.
- BMP Implementation’s Coverage of Impact
  - Yes
  - No

- Additional Mitigation Recommendations

SIC members with appropriate knowledge and expertise on wildlife ecology, biology, and forestry (individually or cooperatively) reviewed NatureServe’s data on the species and ecosystems and made a professional assessment of the impacts of forestry activity each. After, the spreadsheets were prioritized by impact level. These are attached as *Table 1 & Table 2* in the appendix to this document and serve as the guide for future educational efforts directed towards foresters, loggers, landowners, and the public.

## RESULTS

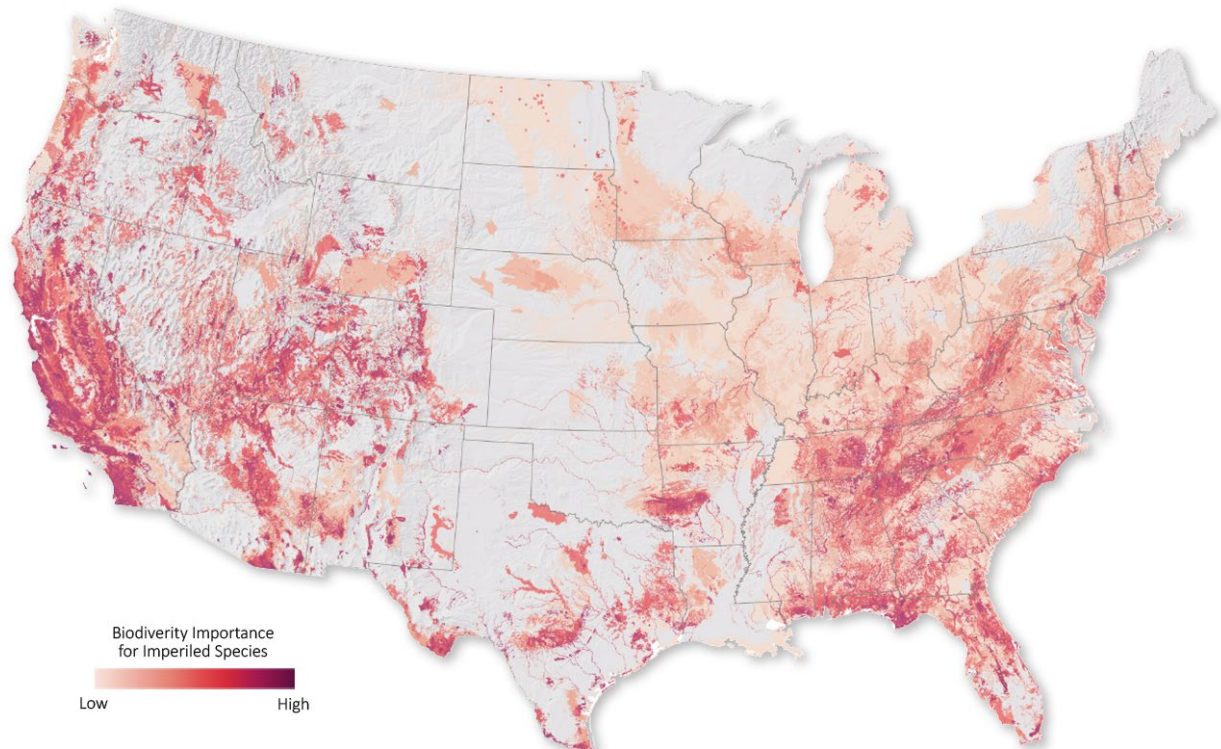
The state of Texas contains 106 G1/G2 species and ecosystems distributed similarly among broad classification groups (*Figure 1*). There are 51 G1/G2 species and 55 ecosystems found in the state.

**Figure 1: Texas Affected G1/G2 Species & Ecosystems**

Species		Classification	Ecosystems		Classification
Impacted	Crayfishes	1	Impacted	Pine Forest Ecosystem	17
8	Dicots	1	Possible Impact	Pine Forest Ecosystem	2
	Dragonflies and Damselflies	1	17	Hardwood Forest Ecosystem	14
	Freshwater Mussels	3		Wetland Ecosystem	1
	Medium and large colubrid snakes	1			
	Monocots	1			
Possible Impact	Dicots	5			
10	Freshwater Mussels	2			
	Frogs and Toads	1			
	Monocots	2			

The assessment found that a minority of the species and ecosystems are impacted by forestry activities as they are unforested or do not use forested habitats in their life cycles. There are others that could potentially be impacted by forestry activities, both positively and negatively. We have grouped the key ones and considered action mitigations.

It is important to note that the area in which timber is managed in Texas has relatively few imperiled species as compared to other regions in the US. *Figure 2* is a map of Biodiversity Importance produced by NatureServe that clearly shows East Texas the biodiversity importance for imperiled species.



**Figure 2:** Map of Biodiversity Importance (<https://www.natureserve.org>)

## DISCUSSION

The Texas SFI SIC Forests of Exceptional Conservation Value (FECV) Assessment evaluated all 106 G1 and G2 species and ecosystems documented by NatureServe and concluded that 26 are impacted by forest management activities.

The 2022 SFI Fiber Sourcing Standard Objective 1, Biodiversity in Fiber Sourcing Performance Measure 1.2, Promotion and conservation of Forests with Exceptional Conservation Value Indicator 2 states SFI-Certified organizations must have a “*Program to address Forests with Exceptional Conservation Value (critically imperiled and imperiled species and ecological communities) for all harvest operations through fiber sourcing activities such as:*

- a. *use of qualified logging professionals, certified logging companies (where available), and qualified resource professionals; or*
- b. *training program for qualified logging professionals on how to recognize and protect Forests with Exceptional Conservation Value; or*
- c. *through in-the-forest verification by certified logging companies; or*
- d. *forest landowner outreach; or*
- e. *SFI Implementation Committee involvement in the assessment of Forests with Exceptional Conservation Value, and development of recommendations for conservation.”*

The SIC will work together to create educational materials that are consistent in design and messaging around FECVs. These materials will provide more information on G1/G2 species and ecosystems, including:

- a. Identification
- b. Specific threats
- c. Mitigation
- d. Sources for more information

These materials will be used in certification-specific training for wood producers, loggers, and foresters. They will also be incorporated into state SIC Landowner manuals and made available to other entities who routinely work with non-industrial private forest landowners (e.g., DNR private lands foresters, consulting foresters, Soil and Water Conservation Districts, etc.).

This state-based assessment provides a thoughtful, science-based process for promoting the conservation of forestry-impacted globally critically impaired and impaired species; and will provide key information to wood producers, foresters, loggers, and private landowners in the fiber procurement supply chain. The assessment will serve to demonstrate SFI-certified organizations' commitment to conserving biodiversity.

### **BIANNUAL REVIEW**

Representatives from the Texas SIC will biannually review the latest available G1/G2 species information from NatureServe to determine if updates are needed. An ad hoc group will then be convened to review the overall state assessment and determine if any findings warrant further actions to mitigate risk to FECV's or specific species or ecosystems.



APPENDIX

**Table 1:** Texas Species Assessment

Texas SFI FECV Assessment 2022 - Species					
View on NatureServe Explorer	Common Name	Scientific Name	NatureServe Rounded Global Rank	Forestry Impact? (- N - No Impact. - P - Possible Impact. - I - Impact.)	Recommended Mitigations
<a href="https://explorer.natureserve.org/Taxon/ELEMENT_GLOBAL.2.112048/Procambarus_nigrocinctus">https://explorer.natureserve.org/Taxon/ELEMENT_GLOBAL.2.112048/Procambarus_nigrocinctus</a>	Blackbelted Crayfish	Procambarus nigrocinctus	G1	I	Water quality provisions of BMPs are adequate
<a href="https://explorer.natureserve.org/Taxon/ELEMENT_GLOBAL.2.113470/Pleurobema_riddellii">https://explorer.natureserve.org/Taxon/ELEMENT_GLOBAL.2.113470/Pleurobema_riddellii</a>	Louisiana Pigtoe	Psathyrella rhodospora	G1	I	Water quality provisions of BMPs are adequate
<a href="https://explorer.natureserve.org/Taxon/ELEMENT_GLOBAL.2.102626/Pituophis_ruthveni">https://explorer.natureserve.org/Taxon/ELEMENT_GLOBAL.2.102626/Pituophis_ruthveni</a>	Louisiana Pine Snake	Pituophis ruthveni	G1	I	Restoring fire as a natural disturbance across the landscape, prescribed-burning, is considered one of the most critical elements of Louisiana pinesnake recovery.

<a href="https://explorer.natureserve.org/Taxon/ELEMENT_GLOBAL.2.652848/Yucca_cernua">https://explorer.natureserve.org/Taxon/ELEMENT_GLOBAL.2.652848/Yucca_cernua</a>	Nodding Yucca	<i>Yucca cernua</i>	G1	I	Very little known - species review and study needed.
<a href="https://explorer.natureserve.org/Taxon/ELEMENT_GLOBAL.2.137823/Leavenworthia_texana">https://explorer.natureserve.org/Taxon/ELEMENT_GLOBAL.2.137823/Leavenworthia_texana</a>	Texas Golden Gladecress	<i>Leavenworthia texana</i>	G1	I	Weches Geologic Formation in San Augustine Count - avoid glauconite rock outcroppings
<a href="https://explorer.natureserve.org/Taxon/ELEMENT_GLOBAL.2.117064/Lampsilis_satura">https://explorer.natureserve.org/Taxon/ELEMENT_GLOBAL.2.117064/Lampsilis_satura</a>	Sandbank Pocketbook	<i>Lampsilis satura</i>	G2	I	Water quality provisions of BMPs are adequate
<a href="https://explorer.natureserve.org/Taxon/ELEMENT_GLOBAL.2.11153/Somatochlora_margarita">https://explorer.natureserve.org/Taxon/ELEMENT_GLOBAL.2.11153/Somatochlora_margarita</a>	Texas Emerald	<i>Somatochlora margarita</i>	G2	I	Water quality provisions of BMPs are adequate
<a href="https://explorer.natureserve.org/Taxon/ELEMENT_GLOBAL.2.1077634/Fusconaia_askewi">https://explorer.natureserve.org/Taxon/ELEMENT_GLOBAL.2.1077634/Fusconaia_askewi</a>	Texas Pigtoe	<i>Fusconaia askewi</i>	G2	I	Water quality provisions of BMPs are adequate
<a href="https://explorer.natureserve.org/Taxon/ELEMENT_GLOBAL.2.143955/Bartonia_texana">https://explorer.natureserve.org/Taxon/ELEMENT_GLOBAL.2.143955/Bartonia_texana</a>	Texas Screwstem	<i>Bartonia texana</i>	G2	I	Water quality provisions of BMPs are adequate

<a href="https://explorer.natureserve.org/Taxon/ELEMENT_GLOBAL.2.103748/Anaxyrus_houstonensis">https://explorer.natureserve.org/Taxon/ELEMENT_GLOBAL.2.103748/Anaxyrus_houstonensis</a>	Houston Toad	Anaxyrus houstonensis	G1	P	Research is urgently needed to determine the status of Houston toad populations outside of Bastrop County and promote conservation efforts in these areas. Research is also critical to determine which management practices are most conducive to the Houston toad and the ecosystem on which it depends.
<a href="https://explorer.natureserve.org/Taxon/ELEMENT_GLOBAL.2.136667/Agalinis_navasotensis">https://explorer.natureserve.org/Taxon/ELEMENT_GLOBAL.2.136667/Agalinis_navasotensis</a>	Navasota False Foxglove	Agalinis navasotensis	G1	P	More studies needed to find more sites and learn more about habitat needs

<a href="https://explorer.natureserve.org/Taxon/ELEMENT_GLOBAL.2.132707/Hibiscus_dasycalyx">https://explorer.natureserve.org/Taxon/ELEMENT_GLOBAL.2.132707/Hibiscus_dasycalyx</a>	<p>Neches River Rosemallow</p>	<p>Hibiscus dasycalyx</p>	<p>G1</p>	<p>P</p>	<p>Prevent changes in the water regime at existing sites. Continue to look for plants in right of way sites and work on management agreements for these areas. Reduce invasive and woody native species at sites.</p>
<a href="https://explorer.natureserve.org/Taxon/ELEMENT_GLOBAL.2.680708/Crataegus_nananixonii">https://explorer.natureserve.org/Taxon/ELEMENT_GLOBAL.2.680708/Crataegus_nananixonii</a>	<p>Nixon's Hawthorn</p>	<p>Crataegus nananixonii</p>	<p>G1</p>	<p>p</p>	<p>Awareness for this species in known location</p>
<a href="https://explorer.natureserve.org/Taxon/ELEMENT_GLOBAL.2.120471/Truncilla_macrodon">https://explorer.natureserve.org/Taxon/ELEMENT_GLOBAL.2.120471/Truncilla_macrodon</a>	<p>Texas Fawnsfoot</p>	<p>Truncilla macrodon</p>	<p>G1</p>	<p>P</p>	<p>Water quality provisions of BMPs are adequate</p>
<a href="https://explorer.natureserve.org/Taxon/ELEMENT_GLOBAL.2.143352/Spiranthes_brevilabris">https://explorer.natureserve.org/Taxon/ELEMENT_GLOBAL.2.143352/Spiranthes_brevilabris</a>	<p>Texas Ladies'-tresses</p>	<p>Spiranthes brevilabris</p>	<p>G1</p>	<p>P</p>	<p>Eliminate exposure to herbicide and increase site disturbance at appropriate times</p>



<a href="https://explorer.natureserve.org/Taxon/ELEMENT_GLOBAL.2.143884/Lesquerella_pallida">https://explorer.natureserve.org/Taxon/ELEMENT_GLOBAL.2.143884/Lesquerella_pallida</a>	White Bladderpod	<i>Lesquerella pallida</i>	G1	P	Maintain suitable open habitat. Biology and ecology research of the species is needed. Survey surrounding areas for additional populations.
<a href="https://explorer.natureserve.org/Taxon/ELEMENT_GLOBAL.2.141093/Platanthera_chapmanii">https://explorer.natureserve.org/Taxon/ELEMENT_GLOBAL.2.141093/Platanthera_chapmanii</a>	Chapman's Fringed Orchid	<i>Platanthera chapmanii</i>	G2	P	Most occurrences on protected land. Additional surveys for suitable habitat off protected land areas may be in order.
<a href="https://explorer.natureserve.org/Taxon/ELEMENT_GLOBAL.2.160275/Calopogon_oklahomensis">https://explorer.natureserve.org/Taxon/ELEMENT_GLOBAL.2.160275/Calopogon_oklahomensis</a>	Oklahoma Grass-pink	<i>Calopogon oklahomensis</i>	G2	P	Survey when converting from pasture to forest and avoid conversion if possible on certain sites
<a href="https://explorer.natureserve.org/Taxon/ELEMENT_GLOBAL.2.115372/Potamilus_amphichaenus">https://explorer.natureserve.org/Taxon/ELEMENT_GLOBAL.2.115372/Potamilus_amphichaenus</a>	Texas Heelsplitter	<i>Potamilus amphichaenus</i>	G2	P	Water quality provisions of BMPs are adequate

<a href="https://explorer.natureserve.org/Taxon/ELEMENT_GLOBAL.2.121116/Phylocentropus_harrisi">https://explorer.natureserve.org/Taxon/ELEMENT_GLOBAL.2.121116/Phylocentropus_harrisi</a>	a caddisfly	Phylocentropus harrisi	G1	N	
<a href="https://explorer.natureserve.org/Taxon/ELEMENT_GLOBAL.2.114296/Chimarra_holzenthali">https://explorer.natureserve.org/Taxon/ELEMENT_GLOBAL.2.114296/Chimarra_holzenthali</a>	Holzenthal's Philopotamid Caddisfly	Chimarra holzenthali	G1	N	
<a href="https://explorer.natureserve.org/Taxon/ELEMENT_GLOBAL.2.133649/Rayjacksonia_aurea">https://explorer.natureserve.org/Taxon/ELEMENT_GLOBAL.2.133649/Rayjacksonia_aurea</a>	Houston Tansy-aster	Rayjacksonia aurea	G1	N	
<a href="https://explorer.natureserve.org/Taxon/ELEMENT_GLOBAL.2.100121/Lepidochelys_kempii">https://explorer.natureserve.org/Taxon/ELEMENT_GLOBAL.2.100121/Lepidochelys_kempii</a>	Kemp's Ridley Sea Turtle	Lepidochelys kempii	G1	N	
<a href="https://explorer.natureserve.org/Taxon/ELEMENT_GLOBAL.2.109379/Hydroptila_ouachita">https://explorer.natureserve.org/Taxon/ELEMENT_GLOBAL.2.109379/Hydroptila_ouachita</a>	Schoolhouse Springs Purse Casemaker Caddisfly	Hydroptila ouachita	G1	N	
<a href="https://explorer.natureserve.org/Taxon/ELEMENT_GLOBAL.2.869634/Monarda_luteola">https://explorer.natureserve.org/Taxon/ELEMENT_GLOBAL.2.869634/Monarda_luteola</a>	Yellow-flower Beebalm	Monarda luteola	G1	N	
<a href="https://explorer.natureserve.org/Taxon/ELEMENT_GLOBAL.2.155716/Thalictrum_arkansanum">https://explorer.natureserve.org/Taxon/ELEMENT_GLOBAL.2.155716/Thalictrum_arkansanum</a>	Arkansas Meadowrue	Thalictrum arkansanum	G2	N	

<a href="https://explorer.natureserve.org/Taxon/ELEMENT_GLOBAL.2.120612/Euphyes_bayensis">https://explorer.natureserve.org/Taxon/ELEMENT_GLOBAL.2.120612/Euphyes_bayensis</a>	Bay Skipper	Euphyes bayensis	G2	N	
<a href="https://explorer.natureserve.org/Taxon/ELEMENT_GLOBAL.2.116283/Faxonella_blairi">https://explorer.natureserve.org/Taxon/ELEMENT_GLOBAL.2.116283/Faxonella_blairi</a>	Blair's Fencing Crayfish	Faxonella blairi	G2	N	
<a href="https://explorer.natureserve.org/Taxon/ELEMENT_GLOBAL.2.156449/Liatris_bracteata">https://explorer.natureserve.org/Taxon/ELEMENT_GLOBAL.2.156449/Liatris_bracteata</a>	Bracted Gayfeather	Liatris bracteata	G2	N	
<a href="https://explorer.natureserve.org/Taxon/ELEMENT_GLOBAL.2.133975/Liatris_cymosa">https://explorer.natureserve.org/Taxon/ELEMENT_GLOBAL.2.133975/Liatris_cymosa</a>	Branched Gayfeather	Liatris cymosa	G2	N	
<a href="https://explorer.natureserve.org/Taxon/ELEMENT_GLOBAL.2.821460/Clematis_carrizoensis">https://explorer.natureserve.org/Taxon/ELEMENT_GLOBAL.2.821460/Clematis_carrizoensis</a>	Carrizo Sands Leatherflower	Clematis carrizoensis	G2	N	
<a href="https://explorer.natureserve.org/Taxon/ELEMENT_GLOBAL.2.737455/Pogonomyrmex_comanche">https://explorer.natureserve.org/Taxon/ELEMENT_GLOBAL.2.737455/Pogonomyrmex_comanche</a>	Comanche Harvester Ant	Pogonomyrmex comanche	G2	N	
<a href="https://explorer.natureserve.org/Taxon/ELEMENT_GLOBAL.2.159653/Physostegia_correllii">https://explorer.natureserve.org/Taxon/ELEMENT_GLOBAL.2.159653/Physostegia_correllii</a>	Correll's False Dragonhead	Physostegia correllii	G2	N	

<a href="https://explorer.natureserve.org/Taxon/ELEMENT_GLOBAL.2.116737/Callophrys_irus">https://explorer.natureserve.org/Taxon/ELEMENT_GLOBAL.2.116737/Callophrys_irus</a>	Frosted Elfin	<i>Callophrys irus</i>	G2	N	
<a href="https://explorer.natureserve.org/Taxon/ELEMENT_GLOBAL.2.159233/Abronia_macrocarpa">https://explorer.natureserve.org/Taxon/ELEMENT_GLOBAL.2.159233/Abronia_macrocarpa</a>	Large-fruit Sand-verbena	<i>Abronia macrocarpa</i>	G2	N	
<a href="https://explorer.natureserve.org/Taxon/ELEMENT_GLOBAL.2.129193/Physostegia_longisepala">https://explorer.natureserve.org/Taxon/ELEMENT_GLOBAL.2.129193/Physostegia_longisepala</a>	Long-sepal Dragon-head	<i>Physostegia longisepala</i>	G2	N	
<a href="https://explorer.natureserve.org/Taxon/ELEMENT_GLOBAL.2.111320/Cheumatopsyche_morsei">https://explorer.natureserve.org/Taxon/ELEMENT_GLOBAL.2.111320/Cheumatopsyche_morsei</a>	Morse's Net-spinning Caddisfly	<i>Cheumatopsyche morsei</i>	G2	N	
<a href="https://explorer.natureserve.org/Taxon/ELEMENT_GLOBAL.2.116903/Procambarus_nechesae">https://explorer.natureserve.org/Taxon/ELEMENT_GLOBAL.2.116903/Procambarus_nechesae</a>	Neches Crayfish	<i>Procambarus nechesae</i>	G2	N	

<a href="https://explorer.natureserve.org/Taxon/ELEMENT_GLOBAL.2.139675/Polygonella_parksii">https://explorer.natureserve.org/Taxon/ELEMENT_GLOBAL.2.139675/Polygonella_parksii</a>	Parks' Jointweed	<i>Polygonella parksii</i>	G2	N	
<a href="https://explorer.natureserve.org/Taxon/ELEMENT_GLOBAL.2.153540/Hymenoxys_texana">https://explorer.natureserve.org/Taxon/ELEMENT_GLOBAL.2.153540/Hymenoxys_texana</a>	Prairie Dawn	<i>Hymenoxys texana</i>	G2	N	
<a href="https://explorer.natureserve.org/Taxon/ELEMENT_GLOBAL.2.113786/Procambarus_regalis">https://explorer.natureserve.org/Taxon/ELEMENT_GLOBAL.2.113786/Procambarus_regalis</a>	Regal Burrowing Crayfish	<i>Procambarus regalis</i>	G2	N	
<a href="https://explorer.natureserve.org/Taxon/ELEMENT_GLOBAL.2.144440/Hymenopappus_carrizoanus">https://explorer.natureserve.org/Taxon/ELEMENT_GLOBAL.2.144440/Hymenopappus_carrizoanus</a>	Sandhill Woolly-white	<i>Hymenopappus carrizoanus</i>	G2	N	
<a href="https://explorer.natureserve.org/Taxon/ELEMENT_GLOBAL.2.944953/Nemophila_sayersensis">https://explorer.natureserve.org/Taxon/ELEMENT_GLOBAL.2.944953/Nemophila_sayersensis</a>	Sayersville blue eyes	<i>Nemophila sayersensis</i>	G2	N	
<a href="https://explorer.natureserve.org/Taxon/ELEMENT_GLOBAL.2.152415/Eriocaulon_koernickianum">https://explorer.natureserve.org/Taxon/ELEMENT_GLOBAL.2.152415/Eriocaulon_koernickianum</a>	Small-headed Pipewort	<i>Eriocaulon koernickianum</i>	G2	N	
<a href="https://explorer.natureserve.org/Taxon/ELEMENT_GLOBAL.2.130068/Cuscuta_attenuata">https://explorer.natureserve.org/Taxon/ELEMENT_GLOBAL.2.130068/Cuscuta_attenuata</a>	Taper-tip Dodder	<i>Cuscuta attenuata</i>	G2	N	
<a href="https://explorer.natureserve.org/Taxon/ELEMENT_GLOBAL.2.146292/Thalictrum_texanum">https://explorer.natureserve.org/Taxon/ELEMENT_GLOBAL.2.146292/Thalictrum_texanum</a>	Texas Meadowrue	<i>Thalictrum texanum</i>	G2	N	
<a href="https://explorer.natureserve.org/Taxon/ELEMENT_GLOBAL.2.144997/Chloris_texensis">https://explorer.natureserve.org/Taxon/ELEMENT_GLOBAL.2.144997/Chloris_texensis</a>	Texas Windmill Grass	<i>Chloris texensis</i>	G2	N	
<a href="https://explorer.natureserve.org/Taxon/ELEMENT_GLOBAL.2.133950/Thurovia_triflora">https://explorer.natureserve.org/Taxon/ELEMENT_GLOBAL.2.133950/Thurovia_triflora</a>	Three-flower Broomweed	<i>Thurovia triflora</i>	G2	N	

<a href="https://explorer.natureserve.org/Taxon/ELEMENT_GLOBAL.2.153730/Geocarpon_minimum">https://explorer.natureserve.org/Taxon/ELEMENT_GLOBAL.2.153730/Geocarpon_minimum</a>	Tiny Tim	Geocarpon minimum	G2	N	
<a href="https://explorer.natureserve.org/Taxon/ELEMENT_GLOBAL.2.103099/Trichechus_manatus">https://explorer.natureserve.org/Taxon/ELEMENT_GLOBAL.2.103099/Trichechus_manatus</a>	West Indian Manatee	Trichechus manatus	G2	N	
<a href="https://explorer.natureserve.org/Taxon/ELEMENT_GLOBAL.2.877827/Leitneria_pilosa">https://explorer.natureserve.org/Taxon/ELEMENT_GLOBAL.2.877827/Leitneria_pilosa</a>	Western Corkwood	Leitneria pilosa	G2	N	

**Table 2:** Texas Ecosystem Assessment

Texas SFI FECV Assessment 2022 - Ecosystems					
View on NatureServe Explorer	Common Name	Scientific Name	NatureServe Rounded Global Rank	Forestry Impact? (N - No Impact, P - Possible Impact, I - Impact)	Additional Recommended Mitigations
<a href="https://explorer.natureserve.org/Taxon/ELEMENT_GLOBAL.2.687382/Pinus_palustris_-_Pinus_echinata_-_Quercus_(incana_margarettae)_-_Schizachyrium_scoparium_Woodland">https://explorer.natureserve.org/Taxon/ELEMENT_GLOBAL.2.687382/Pinus_palustris - Pinus echinata - Quercus (incana margarettae) - Schizachyrium scoparium Woodland</a>	West Gulf Coastal Plain Fire-Infrequent Xeric Longleaf Pine Sandhill Woodland	Pinus palustris - Pinus echinata - Quercus (incana, margarettae) / Schizachyrium scoparium Woodland	G1	I	Introduction of fire back into the ecosystem
<a href="https://explorer.natureserve.org/Taxon/ELEMENT_GLOBAL.2.685092/Pinus_palustris_-_Quercus_incana_-_Schizachyrium_scoparium_-_Liatris_elegans_-_Opuntia_humifusa_Woodland">https://explorer.natureserve.org/Taxon/ELEMENT_GLOBAL.2.685092/Pinus_palustris - Quercus incana - Schizachyrium scoparium - Liatris elegans - Opuntia humifusa Woodland</a>	Western Upland Longleaf Pine Forest (Stream Terrace Sandy Woodland Type)	Pinus palustris / Quercus incana / Schizachyrium scoparium - Liatris elegans - Opuntia humifusa Woodland	G1	I	Introduction of fire back into the ecosystem
<a href="https://explorer.natureserve.org/Taxon/ELEMENT_GLOBAL.2.689458/Pinus_palustris_-_Quercus_marilandica_-_Schizachyrium_scoparium_-_Silphium_laciniatum_-_Ruellia_humilis_Woodland">https://explorer.natureserve.org/Taxon/ELEMENT_GLOBAL.2.689458/Pinus_palustris - Quercus marilandica - Schizachyrium scoparium - Silphium laciniatum - Ruellia humilis Woodland</a>	West Gulf Coastal Plain Calcareous Clay Longleaf Pine Glade	Pinus palustris / Quercus marilandica / Schizachyrium scoparium - Silphium laciniatum -	G1	I	Introduction of fire back into the ecosystem, present in a single location in Fox Hunters Hill, Sabine National Forest, additionally, this

		Ruellia humilis Woodland			community may occur on or near the Catahoula barrens in eastern Texas
<a href="https://explorer.natureserve.org/Taxon/ELEMENT_GLOBAL.2.683815/Pinus_palustris_-_Pinus_(echinata_taeda)_Upper_West_Gulf_Coastal_Plain_Woodland">https://explorer.natureserve.org/Taxon/ELEMENT_GLOBAL.2.683815/Pinus_palustris - Pinus (echinata taeda) Upper West Gulf Coastal Plain Woodland</a>	Texas Upper West Gulf Coastal Plain Longleaf Pine Woodland	Pinus palustris - Pinus (echinata, taeda) Upper West Gulf Coastal Plain Woodland	G1	I	Introduction of fire back into the ecosystem, occurs in the Upper West Gulf Coastal Plain of Texas and has been documented from Davy Crockett National Forest (Trinity and Houston counties) as well as Sabine National Forest (Shelby County)
<a href="https://explorer.natureserve.org/Taxon/ELEMENT_GLOBAL.2.687536/Pinus_palustris_-_Quercus_incana_-_Quercus_margarettae_-_Cnidoscolus_texanus_-_Stylisma_pickeringii_var_pattersonii_Woodland">https://explorer.natureserve.org/Taxon/ELEMENT_GLOBAL.2.687536/Pinus_palustris - Quercus incana - Quercus margarettae - Cnidoscolus texanus - Stylisma pickeringii var pattersonii Woodland</a>	West Gulf Coastal Plain Xeric Longleaf Pine Sandhill	Pinus palustris / Quercus incana - Quercus margarettae / Cnidoscolus texanus - Stylisma pickeringii var. pattersonii Woodland	G2	I	This longleaf pine woodland community is found only in a restricted range and under a specific set of habitat conditions in eastern Texas, particularly on the Willis, Catahoula,



					and Carrizo formations. Landowners identify sites and can refrain from conversion
<a href="https://explorer.natureserve.org/Taxon/ELEMENT_GLOBAL.2.833197/Pinus_palustris_-_Quercus_laevis_Xeric_Woodland_Group">https://explorer.natureserve.org/Taxon/ELEMENT_GLOBAL.2.833197/Pinus_palustris_-_Quercus_laevis_Xeric_Woodland_Group</a>	Xeric Longleaf Pine Woodland	Pinus palustris / Quercus laevis Xeric Woodland Group	G2	I	Introduction of fire back into the ecosystem
<a href="https://explorer.natureserve.org/Taxon/ELEMENT_GLOBAL.2.833196/Pinus_palustris_-_Quercus_margarettae_-_Aristida_spp_Woodland_Group">https://explorer.natureserve.org/Taxon/ELEMENT_GLOBAL.2.833196/Pinus_palustris_-_Quercus_margarettae_-_Aristida_spp_Woodland_Group</a>	Dry-Mesic Loamy Longleaf Pine Woodland	Pinus palustris / Quercus margarettae / Aristida spp. Woodland Group	G2	I	Introduction of fire back into the ecosystem
<a href="https://explorer.natureserve.org/Taxon/ELEMENT_GLOBAL.2.837011/Pinus_palustris_-_Pinus_elliottii_-_Pinus_serotina_Open_Woodland_Group">https://explorer.natureserve.org/Taxon/ELEMENT_GLOBAL.2.837011/Pinus_palustris_-_Pinus_elliottii_-_Pinus_serotina_Open_Woodland_Group</a>	Wet-Mesic Longleaf Pine Open Woodland	Pinus palustris - Pinus elliottii - Pinus serotina Open Woodland Group	G2	I	Introduction of fire back into the ecosystem
<a href="https://explorer.natureserve.org/Taxon/ELEMENT_GLOBAL.2.688494/Pinus_palustris_-_Pinus_(echinata_taeda)_">https://explorer.natureserve.org/Taxon/ELEMENT_GLOBAL.2.688494/Pinus_palustris_-_Pinus_(echinata_taeda)_</a>	West Gulf Coastal Plain Fire-Infrequent Mixed Longleaf Pine Woodland	Pinus palustris - Pinus (echinata, taeda) - Quercus falcata - Carya texana Woodland	G2	I	Introduction of fire back into the ecosystem

<p><a href="#"><u>Quercus falcata - Carya texana Woodland</u></a></p>					
<p><a href="https://explorer.natureserve.org/Taxon/ELEMENT_GLOBAL.2.683637/Pinus_palustris_-_Quercus_incana_-_Schizachyrium_scoparium_-_Croton_argyranthemus_Woodland"><u>https://explorer.natureserve.org/Taxon/ELEMENT_GLOBAL.2.683637/Pinus_palustris - Quercus incana - Schizachyrium scoparium - Croton argyranthemus Woodland</u></a></p>	<p>West Gulf Coastal Plain Subxeric Longleaf Pine Sandhill</p>	<p>Pinus palustris / Quercus incana / Schizachyrium scoparium - Croton argyranthemus Woodland</p>	<p>G2</p>	<p>I</p>	<p>Introduction of fire back into the ecosystem</p>
<p><a href="https://explorer.natureserve.org/Taxon/ELEMENT_GLOBAL.2.684626/Pinus_palustris_-_Quercus_marilandica_West_Gulf_Woodland"><u>https://explorer.natureserve.org/Taxon/ELEMENT_GLOBAL.2.684626/Pinus_palustris - Quercus marilandica West Gulf Woodland</u></a></p>	<p>West Gulf Coastal Plain Clayey Longleaf Pine Forest</p>	<p>Pinus palustris - Quercus marilandica West Gulf Woodland</p>	<p>G2</p>	<p>I</p>	<p>Introduction of fire back into the ecosystem. In eastern Texas this type occurs primarily on the Manning, Yegua, and Cook Mountain geologic formations</p>
<p><a href="https://explorer.natureserve.org/Taxon/ELEMENT_GLOBAL.2.685091/Pinus_palustris_-_Quercus_marilandica_-_Ilex_vomitorea_-_Schizachyrium_scoparium_Woodland"><u>https://explorer.natureserve.org/Taxon/ELEMENT_GLOBAL.2.685091/Pinus_palustris - Quercus marilandica - Ilex vomitoria - Schizachyrium scoparium Woodland</u></a></p>	<p>West Gulf Coastal Plain Clayey Longleaf Pine Woodland (Dry Type)</p>	<p>Pinus palustris / Quercus marilandica / Ilex vomitoria / Schizachyrium scoparium Woodland</p>	<p>G2</p>	<p>I</p>	<p>Introduction of fire back into the ecosystem. This longleaf pine woodland community is found only in a very localized range and under a specific set of habitat conditions</p>

<a href="https://explorer.natureserve.org/Taxon/ELEMENT_GLOBAL.2.684627/Pinus_palustris_-_Quercus_marilandica_-_Panicum_virgatum_Woodland">https://explorer.natureserve.org/Taxon/ELEMENT_GLOBAL.2.684627/Pinus_palustris - Quercus_marilandica - Panicum_virgatum Woodland</a>	West Gulf Coastal Plain Clayey Longleaf Pine Woodland (Moist Type)	Pinus palustris / Quercus marilandica / Panicum virgatum Woodland	G2	I	Introduction of fire back into the ecosystem. Only known from the Sabine National Forest on soils with vertic properties which are unusual for longleaf pine.
<a href="https://explorer.natureserve.org/Taxon/ELEMENT_GLOBAL.2.684289/Pinus_palustris_-_Schizachyrium_scoparium_-_Liatris_pycnostachya_Woodland">https://explorer.natureserve.org/Taxon/ELEMENT_GLOBAL.2.684289/Pinus_palustris - Schizachyrium_scoparium - Liatris_pycnostachya Woodland</a>	West Gulf Coastal Plain Mesic Upland Longleaf Pine Woodland	Pinus palustris / Schizachyrium scoparium - Liatris pycnostachya Woodland	G2	I	More data needed to more specifically define this group
<a href="https://explorer.natureserve.org/Taxon/ELEMENT_GLOBAL.2.688597/Pinus_palustris_-_Schizachyrium_scoparium_-_Rudbeckia_grandiflora_var_alismifolia_Woodland">https://explorer.natureserve.org/Taxon/ELEMENT_GLOBAL.2.688597/Pinus_palustris - Schizachyrium_scoparium - Rudbeckia_grandiflora var. alismifolia Woodland</a>	West Gulf Coastal Plain Dry-Mesic Upland Longleaf Pine Woodland	Pinus palustris / Schizachyrium scoparium - Rudbeckia grandiflora var. alismifolia Woodland	G2	I	More data needed to more specifically define this group
<a href="https://explorer.natureserve.org/Taxon/ELEMENT_GLOBAL.2.686504/Pinus_palustris_-_Schizachyrium_scoparium_-_Schizachyrium_tenerum_-_Silphium_gracile_Woodland">https://explorer.natureserve.org/Taxon/ELEMENT_GLOBAL.2.686504/Pinus_palustris - Schizachyrium_scoparium - Schizachyrium_tenerum - Silphium_gracile Woodland</a>	Western Upland Longleaf Pine Forest (Messer Pimple Mound Type)	Pinus palustris / Schizachyrium scoparium - Schizachyrium tenerum - Silphium gracile Woodland	G2	I	No confirmed areas in TX

<a href="https://explorer.natureserve.org/Taxon/ELEMENT_GLOBAL.2.683119/Pinus_palustris_-_Rhynchospora_elliottii_-_Lobelia_flaccidifolia_-_Platanthera_nivea_-_Helenium_drummondii">https://explorer.natureserve.org/Taxon/ELEMENT_GLOBAL.2.683119/Pinus_palustris - Rhynchospora_elliottii - Lobelia_flaccidifolia - Platanthera_nivea - (Helenium_drummondii) Woo</a> <a href="#">dland</a>	Western Wet Longleaf Pine Savanna (Prairie Terraces Acidic Silt Loam Type)	Pinus palustris / Rhynchospora elliottii - Lobelia flaccidifolia - Platanthera nivea - (Helenium drummondii) Woodland	G2	I	Possible remnants in Hardin Co, TX
<a href="https://explorer.natureserve.org/Taxon/ELEMENT_GLOBAL.2.688666/Magnolia_grandiflora_-_Prunus_caroliniana_-_Carpinus_caroliniana_-_Arundinaria_gigantea">https://explorer.natureserve.org/Taxon/ELEMENT_GLOBAL.2.688666/Magnolia_grandiflora - Prunus_caroliniana - Carpinus_caroliniana - Arundinaria_gigantea</a> <a href="#">Forest</a>	Texas Upper West Gulf Coastal Plain Southern Magnolia Forest	Magnolia grandiflora / Prunus caroliniana - Carpinus caroliniana / Arundinaria gigantea Forest	G1	P	Can be preserved with proper planning of future area harvests
<a href="https://explorer.natureserve.org/Taxon/ELEMENT_GLOBAL.2.686085/Celtis_laevigata_-_Gleditsia_triacanthos_-_Sapindus_saponaria_var_drummondii_-_Lithospermum_tuberosum_-_Carex_willdenowii">https://explorer.natureserve.org/Taxon/ELEMENT_GLOBAL.2.686085/Celtis_laevigata - Gleditsia_triacanthos - Sapindus_saponaria_var_drummondii - Lithospermum_tuberosum - Carex_willdenowii</a> <a href="#">Forest</a>	West Gulf Coastal Plain Calcareous Small Stream Bottomland Forest	Celtis laevigata - Gleditsia triacanthos - Sapindus saponaria var. drummondii / Lithospermum tuberosum - Carex willdenowii Forest	G1	P	Landowners identify sites and can refrain from conversion
<a href="https://explorer.natureserve.org/Taxon/ELEMENT_GLOBAL.2.689498/Quercus_virginiana_-_Magnolia_grandiflora_-_Quercus_pagoda">https://explorer.natureserve.org/Taxon/ELEMENT_GLOBAL.2.689498/Quercus_virginiana - Magnolia_grandiflora - Quercus_pagoda</a> <a href="#">Forest</a>	Gulf Coast Salt Dome Hardwood Forest	Quercus virginiana - Magnolia grandiflora - Quercus pagoda - Celtis laevigata /	G1	P	Landowners identify sites and can refrain from conversion

<p><a href="#">Celtis laevigata - Sabal minor Forest</a></p>		<p>Sabal minor Forest</p>			
<p><a href="https://explorer.natureserve.org/Taxon/ELEMENT_GLOBAL.2.687166/Pinus_echinata_-Pinus_taeda_-Quercus_stellata_-Juniperus_virginiana_-Cornus_drummondii_Woodland">https://explorer.natureserve.org/Taxon/ELEMENT_GLOBAL.2.687166/Pinus_echinata - Pinus taeda - Quercus stellata - Juniperus virginiana - Cornus drummondii Woodland</a></p>	<p>West Gulf Coastal Plain Calcareous Pine - Oak Woodland</p>	<p>Pinus echinata - Pinus taeda - Quercus stellata / Juniperus virginiana / Cornus drummondii Woodland</p>	<p>G1</p>	<p>P</p>	<p>Landowners identify sites and can refrain from conversion</p>
<p><a href="https://explorer.natureserve.org/Taxon/ELEMENT_GLOBAL.2.686865/Quercus_stellata_-Carya_texana_-(Pinus_palustris)_-Chasmanthium_sessiliflorum_-Ranunculus_fascicularis_Woodland">https://explorer.natureserve.org/Taxon/ELEMENT_GLOBAL.2.686865/Quercus stellata - Carya texana - (Pinus palustris) - Chasmanthium sessiliflorum - Ranunculus fascicularis Woodland</a></p>	<p>East Texas Catahoula Barrens Post Oak Woodland</p>	<p>Quercus stellata - Carya texana - (Pinus palustris) / Chasmanthium sessiliflorum - Ranunculus fascicularis Woodland</p>	<p>G1</p>	<p>P</p>	<p>Landowners identify sites and can refrain from conversion</p>
<p><a href="https://explorer.natureserve.org/Taxon/ELEMENT_GLOBAL.2.686580/Quercus_stellata_-Forestiera_ligustrina_-Symphoricarpos_orbiculatus_-Carex_cherokeensis_-Schizachyrium_scoparium_Woodland">https://explorer.natureserve.org/Taxon/ELEMENT_GLOBAL.2.686580/Quercus stellata - Forestiera ligustrina - Symphoricarpos orbiculatus - Carex cherokeensis - Schizachyrium scoparium Woodland</a></p>	<p>Upper West Gulf Coastal Plain Prairie Periphery Oak Woodland</p>	<p>Quercus stellata / Forestiera ligustrina - Symphoricarpos orbiculatus / Carex cherokeensis - Schizachyrium scoparium Woodland</p>	<p>G1</p>	<p>P</p>	<p>Landowners identify sites and reintroduce fire to the ecosystem for habitat enhancement.</p>

<a href="https://explorer.natureserve.org/Taxon/ELEMENT_GLOBAL.2.688505/(Quercus_laurifolia)_Crataegus_opaca_Crataegus_viridis_Swamp_Forest">https://explorer.natureserve.org/Taxon/ELEMENT_GLOBAL.2.688505/(Quercus laurifolia) - Crataegus opaca - Crataegus viridis Swamp Forest</a>	Western Mayhaw Pond	(Quercus laurifolia) / Crataegus opaca - Crataegus viridis Swamp Forest	G1	P	Landowners identify sites and can refrain from conversion
<a href="https://explorer.natureserve.org/Taxon/ELEMENT_GLOBAL.2.684324/Fagus_grandifolia_Magnolia_grandiflora_Quercus_alba_Carpinus_caroliniana_Ostrya_virginiana_Forest">https://explorer.natureserve.org/Taxon/ELEMENT_GLOBAL.2.684324/Fagus grandifolia - Magnolia grandiflora - Quercus alba - Carpinus caroliniana - Ostrya virginiana Forest</a>	West Gulf Coastal Plain Beech - Magnolia Forest	Fagus grandifolia - Magnolia grandiflora - Quercus alba / Carpinus caroliniana - Ostrya virginiana Forest	G2	P	Landowners identify sites and can refrain from conversion
<a href="https://explorer.natureserve.org/Taxon/ELEMENT_GLOBAL.2.688163/Fagus_grandifolia_Magnolia_virginiana_(Pinus_palustris)_Chasmanthium_sessiliflorum_Sandhill_Streamhead_Forest">https://explorer.natureserve.org/Taxon/ELEMENT_GLOBAL.2.688163/Fagus grandifolia - Magnolia virginiana - (Pinus palustris) - Chasmanthium sessiliflorum Sandhill Streamhead Forest</a>	West Gulf Coastal Plain Streamhead Forest	Fagus grandifolia - Magnolia virginiana - (Pinus palustris) / Chasmanthium sessiliflorum Sandhill Streamhead Forest	G2	P	Landowners identify sites and can refrain from entering areas
<a href="https://explorer.natureserve.org/Taxon/ELEMENT_GLOBAL.2.688985/Fagus_grandifolia_Quercus_alba_Acer_(floridanum_leucoderme)_Solidago_auriculata_Forest">https://explorer.natureserve.org/Taxon/ELEMENT_GLOBAL.2.688985/Fagus grandifolia - Quercus alba - Acer (floridanum leucoderme) - Solidago auriculata Forest</a>	West Gulf Coastal Plain Beech - White Oak Forest (Subcalcareous Type)	Fagus grandifolia - Quercus alba / Acer (floridanum, leucoderme) / Solidago auriculata Forest	G2	P	Landowners in and around Sabine National Forest can identify sites, refrain from conversion, and consider silviculture practices in adjacent stands

<a href="https://explorer.natureserve.org/Taxon/ELEMENT_GLOBAL.2.687615/(Pinus_palustris) - Quercus_stellata - Quercus_incana - Tetragonotheca_ludoviciana_Woodland">https://explorer.natureserve.org/Taxon/ELEMENT_GLOBAL.2.687615/(Pinus palustris) - Quercus stellata - Quercus incana - Tetragonotheca ludoviciana Woodland</a>	West Gulf Coastal Plain Xeric Post Oak Woodland	(Pinus palustris) - Quercus stellata - Quercus incana / Tetragonotheca ludoviciana Woodland	G2	P	Landowners identify sites and can refrain from conversion
<a href="https://explorer.natureserve.org/Taxon/ELEMENT_GLOBAL.2.688926/Pinus_echinata - (Pinus_taeda) - Quercus_falcata - Dichanthelium_sphaerocarpon_Forest">https://explorer.natureserve.org/Taxon/ELEMENT_GLOBAL.2.688926/Pinus echinata - (Pinus taeda) - Quercus falcata - Dichanthelium sphaerocarpon Forest</a>	West Gulf Coastal Plain Dry Shortleaf Pine Forest	Pinus echinata - (Pinus taeda) - Quercus falcata / Dichanthelium sphaerocarpon Forest	G2	P	Further work is needed to ascertain the northern distribution of this type in Texas and Arkansas, and extent in western Louisiana
<a href="https://explorer.natureserve.org/Taxon/ELEMENT_GLOBAL.2.685613/Pinus_taeda - Quercus_alba - Carya_tomentosa - Acer_floridanum - (Acer_leucoderme) Forest">https://explorer.natureserve.org/Taxon/ELEMENT_GLOBAL.2.685613/Pinus taeda - Quercus alba - Carya tomentosa - Acer floridanum - (Acer leucoderme) Forest</a>	West Gulf Coastal Plain Subcalcareous Pine - Hardwood Slope & Stream Bottom Forest	Pinus taeda - Quercus alba - Carya tomentosa / Acer floridanum - (Acer leucoderme) Forest	G2	P	Landowners identify sites and can refrain from conversion
<a href="https://explorer.natureserve.org/Taxon/ELEMENT_GLOBAL.2.686328/Quercus_laurifolia - Quercus_phellos - Viburnum_dentatum - (Ditrysinia_fruticosa) - Carex_glaucescens Upper West Gulf Wet Flatwoods Forest">https://explorer.natureserve.org/Taxon/ELEMENT_GLOBAL.2.686328/Quercus laurifolia - Quercus phellos - Viburnum dentatum - (Ditrysinia fruticosa) - Carex glaucescens Upper West Gulf Wet Flatwoods Forest</a>	Upper West Gulf Coastal Plain Laurel Oak Flatwoods Forest	Quercus laurifolia - Quercus phellos / Viburnum dentatum - (Ditrysinia fruticosa) / Carex glaucescens Upper West Gulf Wet Flatwoods Forest	G2	P	Landowners identify sites and can refrain from conversion

<a href="https://explorer.natureserve.org/Taxon/ELEMENT_GLOBAL.2.683596/Quercus_stellata_-_Pinus_taeda_Flatwoods_Wet_Forest">https://explorer.natureserve.org/Taxon/ELEMENT_GLOBAL.2.683596/Quercus stellata - Pinus taeda Flatwoods Wet Forest</a>	West Gulf Coastal Plain Post Oak - Loblolly Pine Flatwoods	Quercus stellata - Pinus taeda Flatwoods Wet Forest	G2	P	Landowners identify sites and can refrain from conversion
<a href="https://explorer.natureserve.org/Taxon/ELEMENT_GLOBAL.2.687911/Quercus_nigra_-_Quercus_phellos_-_Carya_myristiciformis_-_Sabal_minor_-_Carex_cherokeensis_Floodplain_Forest">https://explorer.natureserve.org/Taxon/ELEMENT_GLOBAL.2.687911/Quercus nigra - Quercus phellos - Carya myristiciformis - Sabal minor - Carex cherokeensis Floodplain Forest</a>	Upper West Gulf Coastal Plain Circumneutral Water Oak - Willow Oak Floodplain Forest	Quercus nigra - Quercus phellos / Carya myristiciformis - Sabal minor / Carex cherokeensis Floodplain Forest	G2	P	Landowners identify sites and can refrain from conversion
<a href="https://explorer.natureserve.org/Taxon/ELEMENT_GLOBAL.2.684588/Quercus_phellos_-_Quercus_nigra_-_Sabal_minor_-_Ditrysinia_fruticosa_Floodplain_Forest">https://explorer.natureserve.org/Taxon/ELEMENT_GLOBAL.2.684588/Quercus phellos - Quercus nigra - Sabal minor - Ditrysinia fruticosa Floodplain Forest</a>	West Gulf Coastal Plain Oak / Dwarf Palmetto Rich Bottomland Forest	Quercus phellos - Quercus nigra / Sabal minor - Ditrysinia fruticosa Floodplain Forest	G2	P	Landowners identify sites and can refrain from conversion
<a href="https://explorer.natureserve.org/Taxon/ELEMENT_GLOBAL.2.689340/Fraxinus_caroliniana_Swamp_Forest">https://explorer.natureserve.org/Taxon/ELEMENT_GLOBAL.2.689340/Fraxinus caroliniana Swamp Forest</a>	West Gulf Coastal Plain Carolina Ash Swamp Forest	Fraxinus caroliniana Swamp Forest	G2	P	Poorly documented with further research needs to verify distribution



<a href="https://explorer.natureserve.org/Taxon/ELEMENT_GLOBAL.2.689839/Taxodium_distichum_West_Gulf_Coastal_Plain_Lakeshore_Swamp_Woodland">https://explorer.natureserve.org/Taxon/ELEMENT_GLOBAL.2.689839/Taxodium_distichum_West_Gulf_Coastal_Plain_Lakeshore_Swamp_Woodland</a>	West Gulf Coastal Plain Bald-cypress Pondshore	Taxodium distichum West Gulf Coastal Plain Lakeshore Swamp Woodland	G2	P	Can be preserved through selective management and acknowledgment of site by landowners.
<a href="https://explorer.natureserve.org/Taxon/ELEMENT_GLOBAL.2.685263/Quercus_alba_-_Quercus_nigra_-_Ostrya_virginiana_-_Sabal_minor_Forest">https://explorer.natureserve.org/Taxon/ELEMENT_GLOBAL.2.685263/Quercus_alba_-_Quercus_nigra_-_Ostrya_virginiana_-_Sabal_minor_Forest</a>	Upper West Gulf Coastal Plain Subcalcareous White Oak / Dwarf Palmetto Forest	Quercus alba - Quercus nigra / Ostrya virginiana / Sabal minor Forest	G2	P	BMPs can prevent alterations to Hydrology
<a href="https://explorer.natureserve.org/Taxon/ELEMENT_GLOBAL.2.684546/Quercus_alba_-_Quercus_hemisphaerica_-_Prunus_caroliniana_-_Persea_borbonia_-_Viburnum_acerifolium_Forest">https://explorer.natureserve.org/Taxon/ELEMENT_GLOBAL.2.684546/Quercus_alba_-_Quercus_hemisphaerica_-_Prunus_caroliniana_-_Persea_borbonia_-_Viburnum_acerifolium_Forest</a>	Texas Upper West Gulf Coastal Plain Hardwood Slope Forest	Quercus alba - Quercus hemisphaerica / Prunus caroliniana - Persea borbonia - Viburnum acerifolium Forest	G2	P	proper planning of silvicultural enhancements designed for red-cockaded woodpeckers, including increased prescribed burning can reduce impacts to this forest type
<a href="https://explorer.natureserve.org/Taxon/ELEMENT_GLOBAL.2.687597/Pinus_echinata_-_Quercus_stellata_-_Quercus_falcata_-_Carya_texana_Woodland">https://explorer.natureserve.org/Taxon/ELEMENT_GLOBAL.2.687597/Pinus_echinata_-_Quercus_stellata_-_Quercus_falcata_-_Carya_texana_Woodland</a>	West Gulf Coastal Plain Shortleaf Pine - Post Oak Woodland	Pinus echinata - Quercus stellata - Quercus falcata - Carya texana Woodland	G1	N	

<a href="https://explorer.natureserve.org/Taxon/ELEMENT_GLOBAL.2.686000/Pinus_taeda_-_Quercus_michauxii_-_Thaspium_barbinode_Forest">https://explorer.natureserve.org/Taxon/ELEMENT_GLOBAL.2.686000/Pinus_taeda - (Pinus echinata) - Quercus michauxii - Thaspium barbinode Forest</a>	Neches Bluff Pine / Swamp Chestnut Oak Forest	Pinus taeda - (Pinus echinata) / Quercus michauxii / Thaspium barbinode Forest	G1	N	
<a href="https://explorer.natureserve.org/Taxon/ELEMENT_GLOBAL.2.833201/Fagus_grandifolia_-_Magnolia_grandiflora_-_Quercus_spp_Forest_Group">https://explorer.natureserve.org/Taxon/ELEMENT_GLOBAL.2.833201/Fagus_grandifolia - Magnolia grandiflora - Quercus spp Forest Group</a>	Southern Mesic Beech - Magnolia - Oak Forest	Fagus grandifolia - Magnolia grandiflora - Quercus spp. Forest Group	G2	N	
<a href="https://explorer.natureserve.org/Taxon/ELEMENT_GLOBAL.2.833202/Pinus_taeda_-_Pinus_echinata_-_Quercus_spp_Forest_Woodland_Group">https://explorer.natureserve.org/Taxon/ELEMENT_GLOBAL.2.833202/Pinus_taeda - Pinus echinata - Quercus spp Forest Woodland Group</a>	Western Gulf Coastal Plain Pine - Oak Forest & Woodland	Pinus taeda - Pinus echinata - Quercus spp. Forest & Woodland Group	G2	N	
<a href="https://explorer.natureserve.org/Taxon/ELEMENT_GLOBAL.2.836976/Nyssa_biflora_-_Nyssa_ogeche_-_Taxodium_distichum_Basin_Swamp_Group">https://explorer.natureserve.org/Taxon/ELEMENT_GLOBAL.2.836976/Nyssa_biflora - Nyssa ogeche - Taxodium distichum Basin Swamp Group</a>	Coastal Plain Hardwood Basin Swamp	Nyssa biflora - Nyssa ogeche - Taxodium distichum Basin Swamp Group	G2	N	
<a href="https://explorer.natureserve.org/Taxon/ELEMENT_GLOBAL.2.836994/Quercus_laurifolia_-_Quercus_phellos_-_Pinus_taeda_Wet_Flatwoods_Group">https://explorer.natureserve.org/Taxon/ELEMENT_GLOBAL.2.836994/Quercus_laurifolia - Quercus phellos - Pinus taeda Wet Flatwoods Group</a>	Hardwood - Loblolly Pine Nonriverine Wet Flatwoods	Quercus laurifolia - Quercus phellos - Pinus taeda Wet Flatwoods Group	G2	N	

<a href="https://explorer.natureserve.org/Taxon/ELEMENT_GLOBAL.2.688065/Quercus_alba_-_Acer_leucoderme_-_Ostrya_virginiana_-_Solidago_auriculata_Forest">https://explorer.natureserve.org/Taxon/ELEMENT_GLOBAL.2.688065/Quercus alba - Acer leucoderme - Ostrya virginiana - Solidago auriculata Forest</a>	West Gulf Coastal Plain Subcalcareous White Oak Forest	Quercus alba / Acer leucoderme - Ostrya virginiana / Solidago auriculata Forest	G2	N	
<a href="https://explorer.natureserve.org/Taxon/ELEMENT_GLOBAL.2.684542/(Pinus_palustris)_-_Quercus_stellata_-_Quercus_marilandica_-_Carya_texana_-_Tragia_urens_Woodland">https://explorer.natureserve.org/Taxon/ELEMENT_GLOBAL.2.684542/(Pinus palustris) - Quercus stellata - Quercus marilandica - Carya texana - Tragia urens Woodland</a>	West Gulf Coastal Plain Dry Post Oak Woodland	(Pinus palustris) - Quercus stellata - Quercus marilandica - Carya texana / Tragia urens Woodland	G2	N	
<a href="https://explorer.natureserve.org/Taxon/ELEMENT_GLOBAL.2.687817/Pinus_taeda_-_Quercus_stellata_-_Crataegus_spp_Woodland">https://explorer.natureserve.org/Taxon/ELEMENT_GLOBAL.2.687817/Pinus taeda - Quercus stellata - Crataegus spp Woodland</a>	West Gulf Coastal Plain Upland Loblolly Pine - Post Oak Woodland	Pinus taeda - Quercus stellata / Crataegus spp. Woodland	G2	N	
<a href="https://explorer.natureserve.org/Taxon/ELEMENT_GLOBAL.2.683346/Pinus_echinata_-_Quercus_alba_-_Viburnum_(dentatum_acerifolium)_Forest">https://explorer.natureserve.org/Taxon/ELEMENT_GLOBAL.2.683346/Pinus echinata - Quercus alba - Viburnum (dentatum acerifolium) Forest</a>	West Gulf Coastal Plain Shortleaf Pine - Oak Rich Mesic Forest	Pinus echinata - Quercus alba / Viburnum (dentatum, acerifolium) Forest	G2	N	
<a href="https://explorer.natureserve.org/Taxon/ELEMENT_GLOBAL.2.689716/Pinus_taeda_-_Quercus_spp)_-_Ostrya_virginiana_-_Sabal_minor_Forest">https://explorer.natureserve.org/Taxon/ELEMENT_GLOBAL.2.689716/Pinus taeda - (Quercus spp) - Ostrya virginiana - Sabal minor Forest</a>	West Gulf Coastal Plain Subcalcareous Loblolly Pine - Water Oak /	Pinus taeda - (Quercus spp.) / Ostrya virginiana - Sabal minor Forest	G2	N	

<a href="#"><u>Ostrya virginiana - Sabal minor Forest</u></a>	Palmetto Riparian Forest				
<a href="https://explorer.natureserve.org/Taxon/ELEMENT_GLOBAL.2.684319/Pinus_echinata_-_Quercus_(incana_stellata_margarettae)_-_Cnidoscolus_texanus_Woodland"><u>https://explorer.natureserve.org/Taxon/ELEMENT_GLOBAL.2.684319/Pinus_echinata - Quercus (incana stellata margarettae) - Cnidoscolus texanus Woodland</u></a>	West Gulf Coastal Plain Xeric Upland Shortleaf Pine - Oak Woodland	Pinus echinata - Quercus (incana, stellata, margarettae) / Cnidoscolus texanus Woodland	G2	N	
<a href="https://explorer.natureserve.org/Taxon/ELEMENT_GLOBAL.2.687526/Pinus_echinata_-_Quercus_(margarettae_stellata_falcata)_-_Carya_texana_Woodland"><u>https://explorer.natureserve.org/Taxon/ELEMENT_GLOBAL.2.687526/Pinus_echinata - Quercus (margarettae stellata falcata) - Carya texana Woodland</u></a>	West Gulf Coastal Subxeric Shortleaf Pine - Oak Woodland	Pinus echinata - Quercus (margarettae, stellata, falcata) - Carya texana Woodland	G2	N	
<a href="https://explorer.natureserve.org/Taxon/ELEMENT_GLOBAL.2.946361/Pinus_taeda_-_Pinus_echinata)_-_Quercus_(pagoda_phellos)_Wet_Woodland"><u>https://explorer.natureserve.org/Taxon/ELEMENT_GLOBAL.2.946361/Pinus taeda - (Pinus echinata) - Quercus (pagoda phellos) Wet Woodland</u></a>	West Gulf Coastal Plain Pine - Oak Nonriverine Flatwoods	Pinus taeda - (Pinus echinata) - Quercus (pagoda, phellos) Wet Woodland	G2	N	
<a href="https://explorer.natureserve.org/Taxon/ELEMENT_GLOBAL.2.686457/Quercus_pagoda_-_Ulmus_crassifolia)_-_Celtis_laevigata)_-_Carex_cherokeensis_Floodplain_Forest"><u>https://explorer.natureserve.org/Taxon/ELEMENT_GLOBAL.2.686457/Quercus pagoda - Ulmus crassifolia - Celtis laevigata - Carex cherokeensis Floodplain Forest</u></a>	West Gulf Coastal Plain Rich Bottomland Forest	Quercus pagoda / Ulmus crassifolia - Celtis laevigata / Carex cherokeensis Floodplain Forest	G2	N	

<a href="https://explorer.natureserve.org/Taxon/ELEMENT_GLOBAL.2.686831/Quercus_phellos_(Quercus_lyrata)_Carex_joorii_Saccharum_baldwinii_Floodplain_Forest">https://explorer.natureserve.org/Taxon/ELEMENT_GLOBAL.2.686831/Quercus_phellos - (Quercus lyrata) - Carex joorii - Saccharum baldwinii Floodplain Forest</a>	Caddo Lake Bottomland Oak Flat	Quercus phellos - (Quercus lyrata) / Carex joorii - Saccharum baldwinii Floodplain Forest	G2	N	
<a href="https://explorer.natureserve.org/Taxon/ELEMENT_GLOBAL.2.684779/Ulmus_crassifolia_Celtis_laevigata_(Ulmus_rubra)_Carex_digitalis_Geum_canadense_Floodplain_Forest">https://explorer.natureserve.org/Taxon/ELEMENT_GLOBAL.2.684779/Ulmus_crassifolia - Celtis laevigata - (Ulmus rubra) - Carex digitalis - Geum canadense Floodplain Forest</a>	Upper West Gulf Coastal Plain Circumneutral Cedar Elm Floodplain Forest	Ulmus crassifolia - Celtis laevigata - (Ulmus rubra) / Carex digitalis - Geum canadense Floodplain Forest	G2	N	